

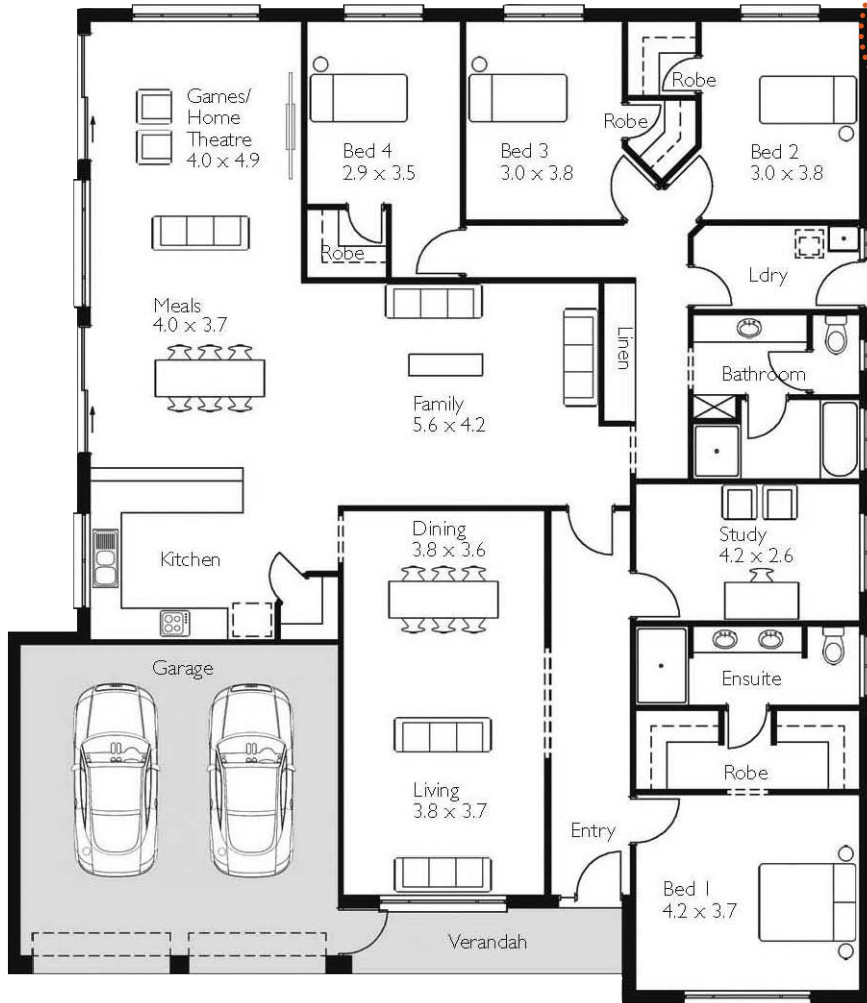


# ADELAIDE MK 2

Living Area: 237.52 sqm  
 Verandah: 6.38 sqm  
 Garage: 40.37 sqm  
 Total: 284.27 sqm (30.53 squares)  
 Width: 16.29m (inc. double garage)  
 Depth: 18.78m



**30.53  
Squares**



- FAMILY
- 2 bathrooms
- 4 bedrooms
- 2 car garage
- 2 living

## Featuring...

- Statesman Homes Premier specification
- Double garage under main roof
- Porch under main roof
- Shopper's entry from the garage
- Walk-in robe and ensuite to B1
- Three way bathroom
- 2400mm high ceilings
- Flick mixer tap to kitchen
- 45 Litre stainless steel laundry trough
- Insulation to ceiling & exterior walls
- Smoke detectors
- Flyscreens to all windows
- Linen cupboard
- plus much more...

\* Conditions apply. Floorplans and elevations are for illustration purposes only. E&OE

**HOUSE & LAND PACKAGE only \$331,685\***